



Enhanced tools for predicting annual stone pine (*Pinus pinea* L.) cone production at tree and forest scale in Inner Spain

Rafael Calama^{1,2*}, Javier Gordo³, Guillermo Madrigal¹, Sven Mutke^{1,2}, Mar Conde¹, Gregorio Montero^{1,2} and Marta Pardos^{1,2}

¹ INIA-CIFOR. Ctra. A Coruña km 7.5 28040 Madrid. Spain. ² iuFOR. Sustainable Forest Management Research Institute UVA-INIA. Spain.

³ Servicio Territorial de Medio Ambiente de Valladolid. C/ Duque de la Victoria, 8. 47001 Valladolid. Spain

Abstract

Aim of the study: To present a new spatiotemporal model for *Pinus pinea* L. annual cone production with validity for Spanish Northern Plateau and Central Range regions. The new model aims to deal with detected deficiencies in previous models: temporal shortage, overestimation of cone production on recent years, incompatibility with data from National Forest Inventory, difficulty for upscaling and ignorance of the inhibitory process due to resource depletion.

Area of study: Spanish Northern Plateau and Central Range regions, covering an area where stone pine occupies more than 90,000 ha.

Material and methods: Fitting data set include 190 plots and more than 1000 trees where cone production has been annually collected from 1996 to 2014. Models were fitted independently for each region, by means of zero-inflated log normal techniques. Validation of the models was carried out over the annual series of cone production at forest scale.

Results: The spatial and temporal factors influencing cone production are similar in both regions, thus the main regional differences in cone yield are related with differences in the phenological timing, the intensity of the influential factors and forest intrinsic conditions. A significant inhibition of floral induction by resource depletion was detected and included into the model. Upscaling the model results in accurate prediction at forest scale.

Research highlights: [1] The new model for annual cone production surpasses the detected deficiencies of previous models, accurately predicting recent decay in cone production; [2] Regional differences in cone production are due to phenological and seasonal climatic differences rather than to between provenances genetic differences.

Keywords: zero-inflated models; pine nut; conelet losses; *Leptoglossus occidentalis*; forest upscaling.

Citation: Calama, R., Gordo, J., Madrigal, G., Mutke, S., Conde, M., Montero, G., Pardos, M. (2016). Enhanced tools for predicting annual stone pine (*Pinus pinea* L.) cone production at tree and forest scale in Inner Spain. *Forest Systems*, Volume 25, Issue 3, e079. <http://dx.doi.org/10.5424/fs/2016253-09671>.

Received: 18 Mar 2016. **Accepted:** 15 Sep 2016.

Copyright © 2016 INIA. This is an open access article distributed under the terms of the Creative Commons Attribution-Non Commercial (by-nc) Spain 3.0 Licence, which permits unrestricted use, distribution, and reproduction in any medium, provided the original work is properly cited.

Funding: This work was carried out within the budgetary framework of the national research projects RTA-2013-00011-C2.1 and AGL2010-15521; the European project FP7-KBBE-2012-311.919-STARTREE and the regional grant PROPINEA, from the Deputation of Valladolid.

Competing interests: The authors have declared that no competing interests exist.

Correspondence should be addressed to Rafael Calama: rcalama@inia.es

Introduction

Sustainable management of the forests require accurate tools for forecasting the different ecosystems services provided under different management schedules, and different environmental and economical scenarios. While growth and timber production models have experienced a huge advance in the last years for the main part of the Mediterranean forest species (see e.g. Bravo *et al.*, 2011), the development of models focusing on non-wood forest products has not been so

intense (Calama *et al.*, 2010). Nevertheless, important research has been recently carried out on some non-wood products as mushrooms (Bonet *et al.*, 2010), cork (Sánchez-González *et al.*, 2007; Vázquez-Piqué & Pereira, 2008) and especially on pine nuts.

Pine nuts from stone pine (*Pinus pinea* L.) constitute the most important edible seed and one of the most important non-wood products obtained from the Mediterranean forests. Pine nuts are a high valuable product, with current retail prices exceeding 100 €/kg, and with an expanding market out of the region. In many forest

areas in the Mediterranean basin, pine nuts represent the most important income for forest owners, even surpassing the profits obtained from timber and fuelwood (Finat & Gordo, 2014). In the last decades, a huge effort has been carried out in Spain, Turkey and Portugal aiming to the domestication of the species, by means of intensive plantation, reproductive propagation by grafting of selected clones for cone production (Mutke, 2013) and application of irrigation and fertilization techniques (Calama *et al.*, 2007). However, the main part of the cones collected and marketed are still cropped from trees growing on natural forests or mature afforestations (Mutke *et al.*, 2012).

Several tools are nowadays available aiming to carry out predictions of cone and pine nut production at different spatial and temporal scales. While the first efforts in modelling cone production were oriented to develop stand level models (Castellani, 1989; García-Güemes, 1999), tree level models have performed better (Cañadas, 2000; Calama *et al.*, 2008), since they allow taking into account both between and within-tree variability in production. However, all these models were pure spatial, allowing to predict average annual cone production at different tree, stand and forest scales, but neglecting the strong masting habit of the species. Mutke *et al.* (2005a) identified the most important climate factors ruling interannual variability in cone production, establishing the main basis for the annual tree level model for cone production in the Spanish Northern Plateau, by Calama *et al.* (2011). This spatiotemporal model, constructed using data from 750 trees with cone series covering ten years (1996-2005), constitutes up to the present the only available tool for predicting annual cone production at tree and forest scales in Spain, and has been implemented within the process based model PICUS (Pardos *et al.*, 2015).

Despite the wide use of this model, severe limitations are identified. The first one is to the narrow spatial range of applicability of the model, limited to the Northern Plateau region in inner Spain (60,000ha). Direct application of the model to other relevant stone pine regions (such as Andalusia or the Central Range) has resulted in biased predictions, thus specific models for these regions are highly required.

A second main limitation is that the model was constructed using a limited series of data covering ten years (1996-2005), and then validated over an extended series of three additional years (2006-2008). Besides this, due to the absence of an independent series for validation, available data set was split out into a fitting and a validating data set, which resulted in a significant reduction in the size of the fitting data set. The accuracy of the model was then successfully evaluated over different years out of the initial tempo-

ral series. However, the constructed model has failed to predict the observed yield decline in the three most recent crops (2012-2013, 2013-2014 and 2014-2015) in the inner part of Spain, a process common to other regions (Mutke *et al.*, 2014). Two main hypotheses have been postulated to explain such decline: a constraining climate factor not considered in the current formulation of the model; and the effect of a new biotic agent, the exotic seed bug *Leptoglossus occidentalis* (Heid.) (Bracalini *et al.*, 2013; Lesieur *et al.*, 2014). Seed predation by this insect has been described as a cause of the abortion of unripe conelets, as well as for provoking a significant reduction of the seed yields in mature cones (Mutke *et al.*, 2014; Calama *et al.*, 2015).

Whatever the main cause is, our current model tend to overestimate the production in recent years, thus the construction of a new model using an extended series of cone production covering up to the most recent crops will give insight on the potential cause for this decrease on the production.

Another factor that might be taken into account for modeling the masting pattern of stone pine, additionally to the predominance of drought-prone climatic covariates (Calama *et al.*, 2011), is the negative autocorrelation with lag 3 observed in the 40-year cone-yield time series at regional scale (Mutke *et al.*, 2005a). This effect has been interpreted as reduction in the number of female flowers induced by the high physiological cost during the ripening of heavy crops (Mutke *et al.*, 2005b). This inhibitory effect of depletion has been largely described in other species (e.g. Sork, 1993; Sala *et al.*, 2012). The original model at tree and stand scale did not consider it, because it would have reduced the ten years series to only seven.

In relation to the original formulation and structure of the model, it included as explanatory covariates stand age and site index, which prevents the sound application of the model in multi-aged stands, where these attributes are not interesting. Apart from this, while common management inventories on even-aged stands may include an estimate of stand age (which can be then applied to compute site index), regional or national scale inventories, as National Forest Inventory, do not include such information, thus limiting the potential use of the model in predicting cone production at these extended spatial scales. Additionally, the annual model does not produce period interval predictions of cone production. Due to this, it is difficult to couple the model with either the existing distance independent tree-level model for the species PINEA2 or the associated stand-level simulator, which makes out predictions at five years steps.

In consequence, the main aim of the paper is to present enhanced and new tools for forecasting cone production in *Pinus pinea* forests in inner Spain aiming to overcome the previously exposed limitations. To tackle with this we propose to attain three specific objectives:

— To build up an enhanced version of the model developed by Calama *et al.* (2011) for annual tree cone production for the *Northern Plateau*, using new available data series. The constructed model will: (i) be compatible with common input data from different sources (NFI, forest management inventories), (ii) be flexible enough to consider different changing climate scenarios, (iii) allow compatibility among annual and periodic estimates of cone production; and (iv) take into account resource depletion effects.

— To build up a new model for annual tree cone production with validity in the forests of the Central Range, sharing similar characteristics and structure as those previously described.

— To present an independent validation on the constructed models based on an approach for upscaling predictions from tree to forest level.

Our main hypothesis are that: (i) the observed recent decay in the cone production can be explained by including climate factors not adequately considered in the previous versions; (ii) the consideration in the model of the delayed inhibitory effect of large cone crops will improve the annual estimates of cone productions; and (iii) the processes controlling cone production in both regions are similar, thus main regional differences are related with the timing (phenology) intensity of the factors rather than on genetic differences.

Material

Studied regions

Pinus pinea forests in the inner part of Spain occupy two main regions, defining two different genetic provenances (Prada *et al.*, 1997): Northern Plateau (from now on NP) and Central Range (from now on CR), with different environmental conditions and management tradition and practices (Figure 1).

The NP region is a plain defined by the basin of Duero river, owing two main differentiated units: sandy areas, at an average altitude of 700 – 750 m and limestone plains, at an altitude over 800-850 m. Within the NP *Pinus pinea* covers more than 60,000 ha, mainly in the province of Valladolid. Lithological

differences have resulted in different soil types. Sandy soils show a very high content of sand (> 90%) and very low water holding capacity (WHC<100 mm), while soils in limestone area, with percentage of clays and limes over 40-50%, reach values of WHC > 250 mm. With respect to climate conditions, NP is a quite homogeneous territory, characterized by a Mediterranean continental climate, with very low precipitations (average annual rainfall: 450 mm), summer drought (<50 mm between July-September) and cold temperatures (average annual temperature 10.5–13.4 °C, minimum absolute temperature below –10 °C). These forests have been managed since the end of 19th century, aiming to guarantee soil protection and optimize both cone and timber production, mainly resulting in pure, even-aged stands. However, more complex forests, showing uneven aged structures and mixtures with other conifers and broadleaves, are commonly found in limestone areas.

Within the CR region stone pine occupies the rocky granitic slopes, which define the basins of the Alberche and Tiétar rivers, between the provinces of Ávila and Madrid. These valleys conform a mountainous area, with an orography of hills and small valleys, with steep slopes defining an abrupt landscape. In this territory, stone pine grows at an altitudinal strip between 600 and 1,000 m occupying more than 30,000 ha. Soils are in general poor, mainly composed by sands (70%-80%), though the main differentiating characteristic is the high presence of granite rocks in surface layers, accounting for 50% of the total soil volume. Concerning climate, CR is a moist Mediterranean region, with average annual rainfall exceeding 700 mm but summer precipitation below 50 mm, and warmer temperatures (average temperature: 14.0 °C with absence of extreme freezing events). The complex orography of these stands as well as the recurrent frequency of forest fires have oriented their main production towards pine nuts and pastures, resulting in mixed, open forests with multi-aged structure, where overmature great cone producers are kept standing and no thinnings are commonly applied (Montero *et al.*, 2003).

Fitting data set: INIA permanent plots

In 1996, INIA-CIFOR, in cooperation with the forest services of Valladolid, Ávila and Madrid, installed a net of permanent plots in pure even-aged stands of *Pinus pinea* within the two studied regions. The net included 141 plots in NP and 52 plots in CR. The plots are circular in shape, with variable radius and include a fixed number of trees: 20 in NP, 10 or 20 in CR. Plots were selected aiming to cover the whole range of site

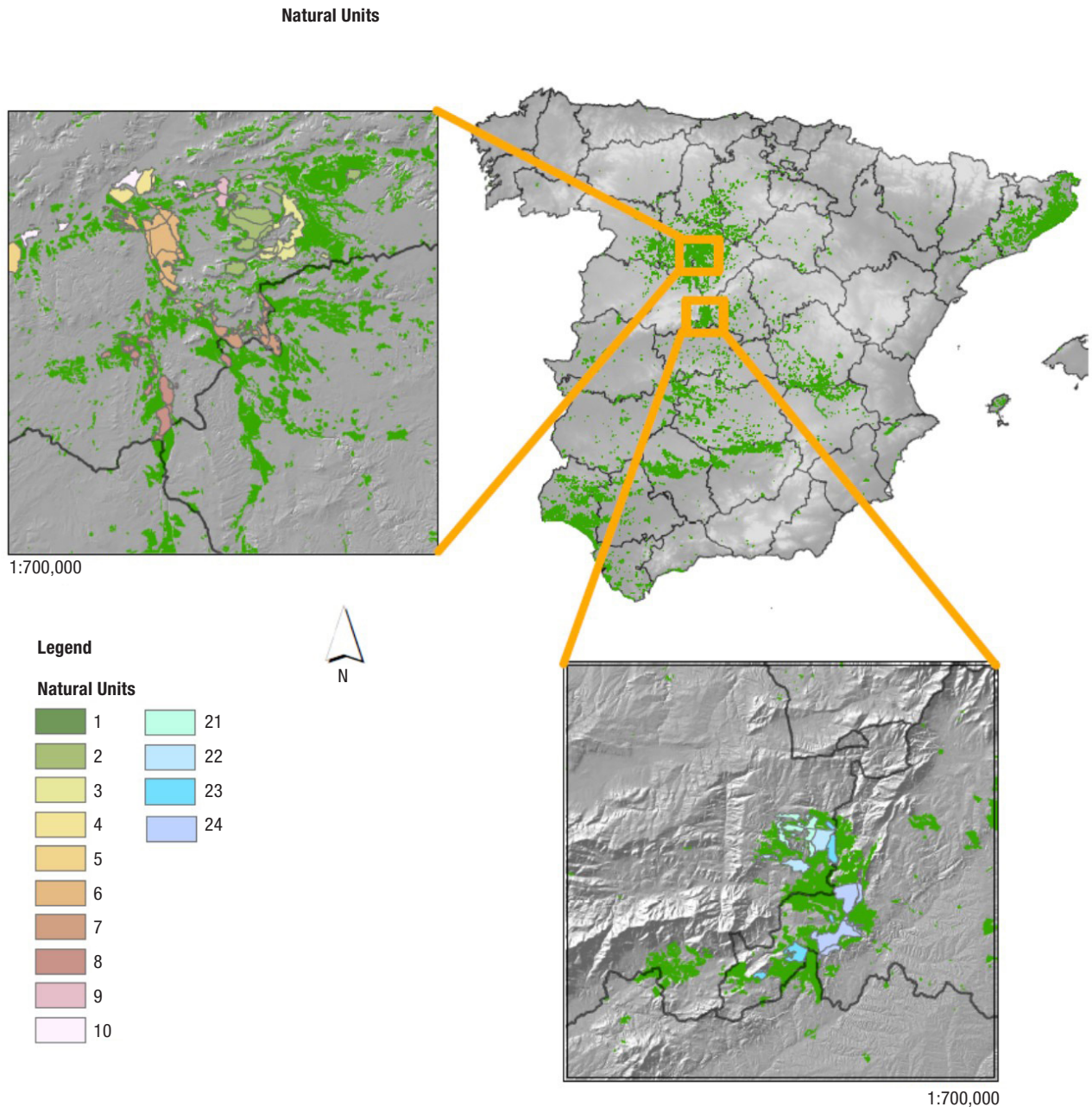


Figure 1. Studied regions and Natural Units definition (uniquely for public forests) overlapped with the total area with presence of *Pinus pinea* L.

conditions, stand stocking and age identified within each region, searching for a uniform spatial distribution, and were always located in public forests.

At plot installation, diameter at breast height, total height, crown diameter, height to crown base and tree coordinates were measured in all the trees within the plot. In a subsample of trees, total age was determined by extracting cores at stump height with a Pressler increment borer. Plots were inventoried in 2001, 2008 and 2015. Main differences among the studied regions in stand and tree level attributes are related with the overmaturity and lower stocking of the stands in CR (Table 1).

In the five trees closer to the plot center, mature cones were collected every year by specialized climbers. Cones from each tree were classified as healthy or damaged by pests (larvae from moth *Dyorictria mendacella* (Stgr.) or the beetle *Pissodes validirostris* (Gyll.), and cones from each category were counted and weighted separately. Between 1996 and 2005 (10 crops years) cones were collected in all the plots within the regions, comprising a total of 750 trees in the NP and 260 trees in CR. From 2006 to 2008 cones were collected in a subsample of 30 plots (150 trees) in NP and 15 plots (75 trees) in CR. Finally, in 2009, 2010, 2013 and 2014 cone collection was maintained in the 30 plots of the NP. Due

Table 1. Mean dendrometric characteristics of the fitting data set plot and trees in each region (NP: Northern Plateau, CR: Central Range) and between-regions differences

Variable	Plot level			Variable	Tree level		
	NP	CR	p-value		NP	CR	p-value
BA	18.3	19.2	ns	dbh	30.4	35.0	<0.0001
N	320	219	0.0173	g	0.084	0.096	<0.0001
Age	62	73	0.0422	h	9.5	10.1	0.0137
Ho	10.0	10.9	ns	cw	5.2	5.6	0.0045
SI	14.6	14.3	ns	CR	0.565	0.566	ns
SDI	337	327	ns	BAL	0.203	0.578	<0.0001
FCC	0.51	0.48	ns				
Dg	29.9	35.3	0.0031				

Where BA: basal area (m²/ha), N: number of stems/ha, Age: years, Ho: dominant height (m), SI: site index (m), SDI: Reineke's stand density index, FCC: crown cover factor, Dg: mean squared diameter, dbh: breast height diameter (cm), g: breast height section (m²), h: tree height (m), cw: crown diameter (m), CR: crown ratio, BAL: basal area of trees larger than subject tree (m²). P-value refers to the level of significance for the null hypothesis of interregional homogeneity.

to budget restrictions, no cones were collected in 2011 and 2012. According to this design, the theoretical number of tree x year observations of cone production should result in 8550 for the Northern Plateau and 2825 for the Central Range. However, due to illegal cone collection, and/or tree natural or catastrophic mortality, total number of tree x year observations resulted in 8074 in NP and 2671 in CR.

Validation data set: provincial series

As an independent data set for validating the model we used the data from the annual series of cone production at forest scale managed by the forest services. Annual cone harvesting rights in public forests are sold every year in public auctions, and at the end of the campaign, enterprises should give a report including total weight of cones collected within the forest. These post-crop data series at forest scale extend from 1962 up to the present in NP (Valladolid province) while in the CR there are available estimates of total cone production covering from 2004 to 2012 campaigns.

Methods

Response variable: annual weight of healthy cones at tree level

As in the previous spatiotemporal model, the proposed response variable was the weight (expressed in kg) of sound cones annually collected in each tree w_c , which is a better indicator than cone number of allocated resources to the reproductive effort, and takes into account the processes of female floral induction and pollination as well as subsequent cone growth,

maturation and effect of common endemic cone pests. As stated in Calama *et al.* (2008, 2011), this variable shows severe departures from normality assumptions, due to asymmetry in the distribution, skewness, and excess of zeros. With respect to the excess of zeroes, for the analyzed series average percentage of null observations (Table 2) reach 54.2% in NP (ranging between 18.8% in 2000 and 85.4% in 2014) and 27.89 % in CR (5.5% in 2000 and 44.3% in 2008).

Zero –inflated models

The observed excess of zeros in the data set largely prevents from using classical statistical approaches. Zero-inflated models (Lambert, 1992) conform an interesting approach for dealing with this kind of data. These models account for the zero observations and the positive outcomes separately. Distributional particularities are dealt with by combining a distribution that explains the binary nature of absence or occurrence of zeros, with a second distribution that models the response variable, conditioned by its occurrence. In this case, the phenomenon under examination is considered the result of two different processes: the first, with a binary outcome, is the occurrence of the event (in our case, fruiting); and the second, determining the intensity of the event (in our case, total weight of the tree cones), conditioned by the occurrence of the event.

The binary part is commonly modelled using a logistic function assuming a binomial distribution. Given the continuous nature of the abundance part, we propose to use a log-normal distribution, since it avoids zero-truncation (meaning that zero responses can only occur in the binomial part of the model) and offers greater potential for modelling highly skewed distributions (Tu, 2002). The so-called Zero-Inflated Log-

Table 2. Mean annual value of cone production at tree level for the studied series (1996-2014 in Northern Plateau; 1996 – 2008 in Central Range)

YEAR	Northern Plateau				Central Range			
	wc	nc	% zeroes	n	wc	nc	% zeroes	n
1996	6.433	23.325	32.1	751	5.951	18.580	14.3	245
1997	3.451	13.770	40.1	750	1.165	5.735	56.2	260
1998	1.462	4.233	49.7	724	2.225	5.119	42.3	260
1999	0.701	2.813	67.7	722	3.697	12.596	24.7	259
2000	5.489	17.871	30.5	698	13.778	40.459	5.5	255
2001	3.214	9.256	64.4	711	4.066	14.514	26.1	249
2002	0.984	4.304	72.0	701	3.092	11.826	26.7	247
2003	0.913	2.725	66.9	680	5.572	18.905	18.2	231
2004	0.150	0.595	82.7	681	4.501	15.922	22.9	231
2005	1.873	9.454	36.8	672	1.986	8.140	40.7	214
2006	4.910	20.255	31.0	145	4.757	19.320	14.7	75
2007	1.200	5.193	79.3	150	5.509	15.627	28.0	75
2008	1.526	4.942	58.7	155	1.624	4.886	44.3	70
2009	2.661	12.658	30.6	111				
2010	4.988	17.909	18.9	143				
2011								
2012								
2013	0.185	0.794	77.9	136				
2014	0.196	0.944	85.4	144				
AVERAGE	2.472	8.952	54.2	8074	4.575	15.063	27.8	2671

Where wc: annual average weight of healthy cones per tree (kg), nc: annual average number of healthy cones per tree, % zeroes: percentage of trees bearing no cones in a given year, n: number of sampled trees.

Normal (ZILN) model can then be expressed in a bi-etapic form:

$$\text{logit } \theta = \ln\left(\frac{\theta}{1-\theta}\right) = \mathbf{x}\alpha$$

$$\mu = E[\ln(\text{wc}) | \text{wc} > 0] = \mathbf{z}\beta$$

$$E(\text{wc} | \mathbf{x}, \mathbf{z}) = \theta \mu = \frac{\exp[\mathbf{x}\alpha]}{1 + \exp[\mathbf{x}\alpha]} \mathbf{z}\beta$$

Where θ represents the probability for having a non-zero value of wc (i.e., obtaining a non null crop), and μ represents the expected value of the logarithmic transformation of wc, conditional to a non-null crop; \mathbf{x} and \mathbf{z} represent vectors of known possible explanatory covariates for modelling θ and μ , respectively; while α and β are vectors of unknown but estimable parameters. For more information on ZILN distributions and modelling see Calama *et al.* (2012).

Explanatory covariates and model construction

Given the huge differences observed in individual tree cone production between NP and CR, the ecological

differences observed among the two analyzed regions, and the different length of the analyzed series, we proposed to fit independent ZILN models for each region. However, we attempted to maintain a similar structure of the model in both regions. To do that, we evaluated the same covariates acting at different spatial and temporal scales as potential predictors of cone production.

Spatial attributes (tree and plot scale)

- Tree size: diameter at breast height, section at breast height, total height.
- Tree level competition: basal area of trees larger than subject tree, ratio dbh / mean squared diameter, ratio tree section / basal area.
- Stand attributes: stocking density (stems/ha), basal area, mean squared diameter, Reineke's stand density index, dominant height, crown cover factor.

Logarithmic, root and inverse transformation of these variables were also evaluated as potential predictors. Stand age and site index, which were predictors in the previous version of the model, were not more considered as potential predictors.

Gordo (2004) proposed a stratification for the territory of the NP into Natural Units (1,400 – 7,200 ha of

stone pine forest each), based on climate, soil, lithology, orography and management characteristic which was included as explanatory in Calama *et al.* (2008, 2011). In the present study, we proposed a similar stratification for the CR region into four regions (2,000 – 4,700 ha), evaluating the entrance of these stratifications as categorical dummy variables (Table 3, Figure 1).

Temporal attributes

— Rainfall: monthly precipitation, starting from the month of January four years before the year of cone maturation and ending up in October of the year of maturation. Apart from single month precipitation, cumulative precipitations in periods covering up to twelve months were also evaluated.

— Temperature: number of freezing days per month.
 — Lagged response: the possible inhibitory delayed effect three years after a bumper crop observed, was taken into account by using data series at regional scale. Average regional value for cone production per ha one, two, three and four years before the current crop were evaluated as potential predictors. This data were obtained from the provincial series of annual cone production.

Rainfall and temperature monthly series were obtained from the most complete meteorological station located within each region: Valladolid meteorological station (41° 39' 8" N - 4° 43' 24" W, 690 m a.s.l.) in NP, and El Tiemblo station (40°24'56" N - 4°30'02" W, 685 m a.s.l.) for CR. The use of a single reference station per region was preferred, because masting pattern had been found to be regionally synchronized rather than locally (Mutke *et al.*, 2005a; Calama *et al.*, 2011).

Table 3. Natural Stratification of the territory in the two analyzed regions

Region	Unit	Name	Area (ha)	Altitude (m)	SI (m)	Geology and texture	Soil Origin	Annual rainfall (mm)	Water retention (mm)	N° plots
NP	1	Torozos	1834	847	14.0	Limestone – Marl	Tertiary sediments	500	350	2
NP	2	Limestone plain W	4757	845	14.9	Limestone - Marl	Tertiary sediments	480	313	17
NP	3	Limestone plain E	2284	854	14.4	Limestone – Marl	Tertiary sediments	480	295	18
NP	4	Valladolid	1908	687	13.1	Quartz sands	Wind deposits	385	107	17
NP	5	Nava del Rey	1480	710	11.8	Quartzitic gravels	Wind deposits	385	175	6
NP	6	Viana de Cega	7211	707	15.1	Quartz sands	Wind deposits	400	160	12
NP	7	Iscar	2945	745	16.7	Quartz sands - Clays	Alluvial – Wind deposits	400	186	19
NP	8	Medina	4044	746	12.5	Quartz sands	Wind deposits	380	111	17
NP	9	Tudela de Duero	1401	712	12.6	Quartz sands	Wind deposits	420	166	10
NP	10	River terraces	1664	688	16.8	Alluvial meadow soils	Alluvial deposits	400	158	22
CR	21	Hoyo Pinares	2720	925	13.6	Rocky granitic slopes	Wind deposits	850	150	17
CR	22	Cofio Valley	2010	875	15.3	Quartz sands & limes	Alluvial – wind	780	200	14
CR	23	Tiétar&North Alberche Valleys	4713	773	15.4	Quartz sands & limes	Alluvial – wind	700	200	14
CR	24	South Alberche Valley	3980	740	12.2	Granitic boles	Wind deposits	650	170	7

Where SI is site index, as stated by Calama *et al.* (2003); total area is uniquely referred to public owned forests.

To ensure the compatibility among annual and periodic predictions, climate variables and the lagged response were standardized by subtracting to the observed annual value the mean value for the series and dividing by the standard deviation. By doing this, periodic predictions over an average year can be carried out by fixing a value of zero for all the temporal attributes. Additionally, the standardization allows to give insight on the relative importance of each temporal predictor over the response variable.

Covariate selection and model construction were carried out following a sequential procedure. In an initial phase, two separate models for the occurrence of the event (fruiting /no fruiting) and the abundance of the event (total weight of cones, in logarithmic scale, only considering nonzero observations) were separately fitted. In this preliminary step, models were fitted as generalized linear mixed models, including random effects at plot, tree, year and plot x year effects. Starting from a basic model that only includes the intercept, the empirical Bayesian estimates for random effects at different levels were correlated with the evaluated covariates acting at those scales, i.e., year random effects *vs* temporal covariates, plot and tree random effects *vs* stand and tree level attributes. The entrance of the covariates largely explaining observed variability at each level was then evaluated for both the occurrence/abundance submodels. The process was sequentially repeated until no more significant covariates entered the submodels. This preliminary set of explanatory covariates was then used as predictors to fit a simultaneous zero-inflated lognormal model. The final model only includes random effects at plot level in both the occurrence and the abundance submodels.

Goodness of fit

Model accuracy was first evaluated over the fitting data set. To do that, marginal predictions (assuming unknown random effects equaling zero) over the response variable, expressed in original weight of cones scale, were computed. Antilogarithmic transformation of the response variable was carried out by applying exponential transformation and then multiplying by the

factor $\exp\frac{1}{2}\left(\sum\sigma_v^2 + \sigma_e^2\right)$, where σ_v^2 and σ_e^2 represent

the variance associated with random plot effect and residual term, respectively.

Thereafter we computed mean error (E), level of significance of the error (p-value), root mean square error (RMSE) and modelling efficiency (MEF) at different scales:

— Tree x year: comparing observed and predicted values of the response variable *wc*.

— Tree: comparing the observed and predicted total production at tree level for the whole period.

— Plot x year: comparing the observed and predicted annual production at plot level.

— Plot: comparing the observed and predicted total production at plot level for the whole period.

— Year: comparing observed and predicted annual average production at tree level.

Independent validation

The constructed models for each region were validated against the available data from the series of cone production at forest scale previously described. The model for the Northern Plateau was validated over the annual series 2004 – 2014 from five forests (numbers 35, 40, 44, 39 and 79, covering more than 5500 ha, 10% of the total stone pine area within the region). We validated the model for the Central Range over the annual series 2004-2012 from forest 75, the most important in the region, covering 1000 ha. Upscaling the predictions from tree level to forest level was carried out by using data from the forest management inventory. Sampling plots are circular, with a fixed radius of 15 m, and are systematically located in a grid of 200 m x 200 m within each forest. Collected attributes include tree dbh for all the trees within the plot and tree height and age in a subsample of trees. The constructed model was then applied to each tree within the plot, and plot annual production was computed as the sum of the predicted productions for each tree. Forest annual production was then upscaled by using common sampling estimation procedures (Mandallaz, 2007). Annual predictions at forest scale were then contrasted with annual post-crop estimates by means of E, RMSE and MEF. In the case of forest 75 (CR) we took into account the observation by the forest service indicating that uniquely in 25% of the total area of the forest cones are collected with commercial purposes due to steep slopes preventing mechanization, isolated areas and distance from forest roads.

Results

Annual cone production in the studied regions

There is a significant difference in cone production at tree level between both regions (Table 2). CR almost doubles the average production of NP for the studied

series in both the weight of cones (4.575 kg/tree in CR vs 2.472 kg/trees in NP, p -value <0.0001) and the number of healthy cones per tree (15.064 cones/tree in CR vs 8.952 cones/tree in NP, p -value <0.0001). This difference is also patent in the percentage of “zero” observations (trees not bearing a single cone in a given year), reaching 54.21% in NP (ranging between 18.88% in 2000 and 85.42% in 2014) and 27.89 % in CR (5.49% in 2000 - 44.28% in 2008).

For the common thirteen-years series (1996-2008), no significant differences between regions are found in 2005, 2006 and 2008 (p -value according to non-parametric Kruskal-Wallis test 0.1442, 0.0563, 0.1660 respectively). Uniquely in 1996 and 1997 average crop in NP was higher than in CR. Constant differences in these values point out to huge and permanent spatial differences in the process of fruiting among regions.

Large interannual variability in cone production is found in the two studied regions, with no significant pattern of synchrony between them (Tau’b kendall: 0.0512, p -value: 0.8072; Figure 2). This could indicate (i) that different climate attributes or phenological timing are acting at each region, or (ii) that even though the same climate factors ruled annual variability in cone production in the two analyzed regions, the intensity of these factors show interregional differences. How-

ever, it is patent that some bumper years are common in both regions (e.g. 1996, 2000), which evidences common factor triggering huge cone crops.

Model fitting

After an independent sequential procedure for model fitting, a similar set of covariates was selected for each region, revealing large interregional similarities in the factors ruling cone production (Table 4). Concerning spatial variability, main predictors explaining cone production at stand and tree level are common in NP and CR: the inverse of the mean squared diameter ($1/dg$), Reineke’s stand density index (SDI) and the ratio between tree diameter (dbh) and dg (dbh/dg); while tree dbh only enters the model in the abundance part for NP. Parameter sign and magnitudes are similar in both regions. The proposed natural stratification of the territory is also highly significant in both regions, pointing out to the importance of this type of stratification to synthesize the effect soil, lithology, orography and other spatially explicit covariates. Noteworthy, once the proposed set of covariates enter the models, the entrance of either stand age or SI did not improve the models.

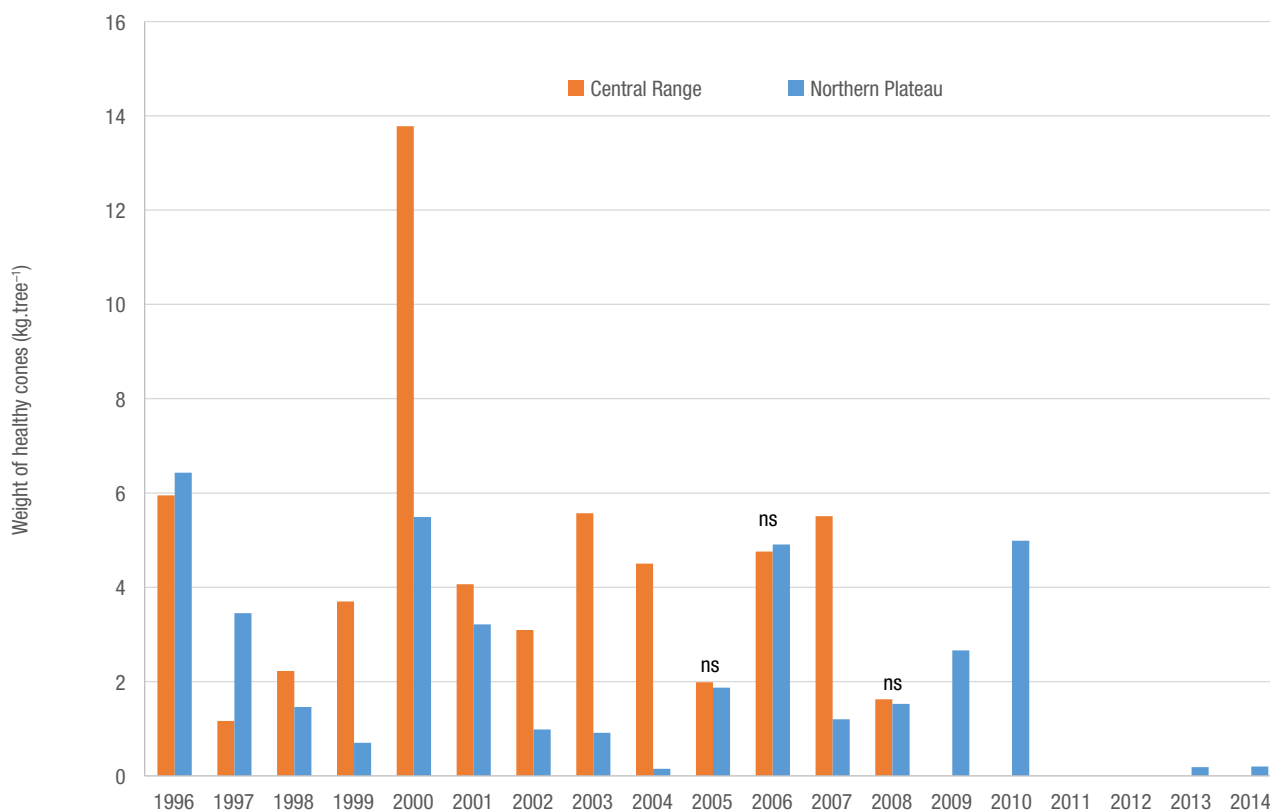


Figure 2. Average tree annual cone production in Central Range and Northern Plateau. Years with non-significant differences between regions are indicated.

Table 4. Parameter estimates for the ZILN models for cone production for Northern Plateau and Central Range

	Northern Plateau			Central Range		
	Covariate	Logistic Part (α)	Log normal Part (β)	Covariate	Logistic Part (α)	Log normal Part (β)
	Intercept	0.3997	-0.8654	Intercept	-1.0177	0.4824
Climate covariates	nv_7_3_std	0.7697	0.4772	dc_10_3_std	0.9125	0.5316
	mr_3_2_std	0.6209	0.0992	my_2_2_std		0.0874
	sp_4_2_std	0.3389	0.2780	sp_2_2_std	0.1529	
	jl_3_0_std	0.3956		dc_4_1_std		0.2337
	jl_7_0_std		0.2496	jn_4_0_std	0.4972	0.3244
	N_heI_std	-0.3237				
Lagged effects	lag_3_2_std	-0.5422	-0.3067	lag_3_std	-0.2029	
Natural Unit	1	2.0233	0.4904	21	0.2914	-0.3915
	2	0	0	22	1.5677	0.4458
	3	-0.0375	-0.2106	23	1.3401	0.1174
	4	-1.6412	-0.8235	24	0	0
	5	-1.5405	-1.0489			
	6	-1.1506	-0.3565			
	7	-0.8612	-0.1578			
	8	-1.7904	-0.6489			
	9	-0.8290	-0.7304			
	10	-0.3490	0.3302			
Stand covariates	1/dg	-58.0943	-25.4095	1/dg	-43.5477	-76.6994
	SDI	-0.0020	-0.0008	SDI	-0.0020	-0.0010
Tree covariates	d/dg	2.3315	1.0931	d/dg	3.0211	2.4468
	dbh		0.0322			
Random components	σ_u^2 (plot)	0.8512		σ_u^2 (plot)	0.8544	
	σ_v^2 (plot)		0.2541	σ_v^2 (plot)		0.1951
	σ^2 (residual)		1.0880	σ^2 (residual)		1.0118
	ρ (correlation term)		0.3307	ρ (correlation term)	0.2702	

In relation with temporally explicit covariates, results show that in both regions the most important factor ruling cone production is the amount of rainfall from spring to fall during the year previous to flowering, together with the rainfall during the months just before and after flowering, as well as the rainfall during the last year of maturation. While general similitudes are observed, the exact season do not match exactly between the two regions, probably due to phenological shifts along thermal gradients (Mutke *et al.*, 2003). However, two main differences between the regions are found: (i) the observed negative impact of the number of days with severe freezing temperatures ($< -5^\circ\text{C}$) during the first winter after flowering in NP, and (ii) the positive effect of the rainfall from September to December during the 2nd year of maturation in CR. Finally, a negative effect of the cumulative sum of the cone crops two and three years before cone maturation is found in both regions. Taking into account that all the temporally explicit covariates are standardized over the mean and standard deviation values for the climate

series 1980 – 2010, further use of the model will require these values (Table 5).

Model goodness of fit

Accuracy of the fitted models over fitting data set was similar for both regions. Predictions were significantly unbiased at all the analyzed spatial and temporal scales, with relative error at scale of prediction always below 6% (Table 6). The fitted models explained over 66% – 69% of the total variability in cumulative cone production during the studied period between plots, and 50% of the variability between trees. Concerning spatiotemporal dynamics, 50% of the total annual variability between plots and 30%-40% of the residual variability at tree x year scale is explained by the models. Finally, modelling efficiency reach values close to 90% in explaining interannual variability in cone production at region scale, clearly mimicking the observed masting pattern (Figure 3).

Table 5. Mean annual and standard deviation values of the temporally explicit covariates entering the models (required for standardization)

NP	Mean	STD	CR	Mean	STD
nv_7_3 (mm)	239.5	78.8	dc_10_3 (mm)	520.9	181.5
mr_3_2 (mm)	102.8	59.7	my_2_2 (mm)	105.8	42.6
sp_4_2 (mm)	89.2	45.0	sp_2_2 (mm)	44.8	32.0
jl_3_0 (mm)	92.6	43.5	dc_4_1 (mm)	327.0	160.9
jl_7_0 (mm)	241.0	76.0	jn_4_0 (mm)	169.7	57.6
N_hel (days)	3.41	3.91			
Cones (kg/ha)	194.526	164.689	Cones (kg/tree)	4.605	3.512

Note: average annual cone production and standard deviation for NP are given in kg/ha, while in CR are referred to NP kg/tree.

Table 6. Goodness of fit statistics of the marginal predictions (in real scale) of the fitted models over fitting data set

	Northern Plateau					Central Range				
	Tree year ⁻¹	Plot year ⁻¹	Tree	Plot	Year	Tree year ⁻¹	Plot year ⁻¹	Tree	Plot	Year
E (kg)	0.016	-0.043	-0.171	-0.477	0.026	-0.264	-1.312	-2.701	-13.558	-0.202
p-value (t-test)	0.8245	0.9540	0.8944	0.9717	0.8736	0.0610	0.2375	0.2813	0.4918	0.3884
RE (%)	0.64%	-0.33%	-0.65%	-0.34%	1.10%	-5.77%	-5.76%	-5.77%	-5.70%	-4.53%
wc_pred (kg)	2.472	12.879	26.284	142.042	2.346	4.840	24.072	49.528	248.592	4.658
wc_obs (kg)	2.491	12.836	26.112	141.565	2.372	4.575	22.759	46.826	235.034	4.455
EF (%)	31.37%	49.14%	49.86%	69.14%	89.47%	40.59%	52.17%	56.71%	66.32%	93.14%
n	8041	1555	763	141	17	2671	537	261	52	13
RMSE (kg)	6.706	29.548	35.564	158.709	0.639	7.282	25.736	40.431	140.485	0.809

Where E: mean error, p-value: level of significance for null hypothesis E=0, RE: relative error; wc_pred and wc_obs: predicted and observed weight of cones, EF: modelling efficiency, n: number of observations, RMSE: root mean square error.

We compared the constructed model with a new refit of the previous model by Calama *et al.*, (2011) to the currently available data set for the Northern Plateau, identifying that the new proposed set of covariates explain better the observed variability in the response variable (AIC: 19279 vs 19593). Apart from this, the previous set of covariates failed to explain the observed decay in the crops following 2012-2013 campaign, a process which is now mimicked by the new model (Figure 3).

Independent Validation

Upscaling the predictions by the model to the forest scale led to unbiased results for the annual cone production of the six analyzed forests over the studied series 2004-2014 (Table 7). Mean error ranges from -14 to 45 kg.ha.year⁻¹. Modelling efficiency at forest scale range from 0.61 to 0.90, except for the forest 40, where due to the exceptional bias in 2005-2006 (predicted crop at forest scale over 205000 kg, while collected crop uniquely reached 66000 kg), MEF is reduced down to 0.23. Root mean square error for the analyzed forests varies from 20 to 95 kg.ha.year⁻¹. The model attains to mimic the observed pattern of

interannual variability at forest scale, mainly in differentiating among bumper and non-bumper crops (Figure 4), and especially predicting adequately the reduced crops observed after the 2010-2011 exceptional bumper year.

Discussion

The constructed model for the Northern Plateau means an improvement over the previous model (Calama *et al.*, 2011), making use of the extended data series of cone production, now covering up to 17 years in some plots. From the original model, some variables difficult to measure or time and money consuming, as the stand age, or necessarily estimated from other models, as the site index, were successfully removed by using alternative approaches, based on stand density, mean squared diameter, and the stratification in Natural Units. In the case of site index this result indicates that a sound ecologically based stratification of the territory can be as useful as site index in explaining differences in quality, as previously stated in other works by the species (Calama *et al.*, 2008). Stand age has been substituted by the inverse of the mean squared diameter, a predictor commonly measured in forest

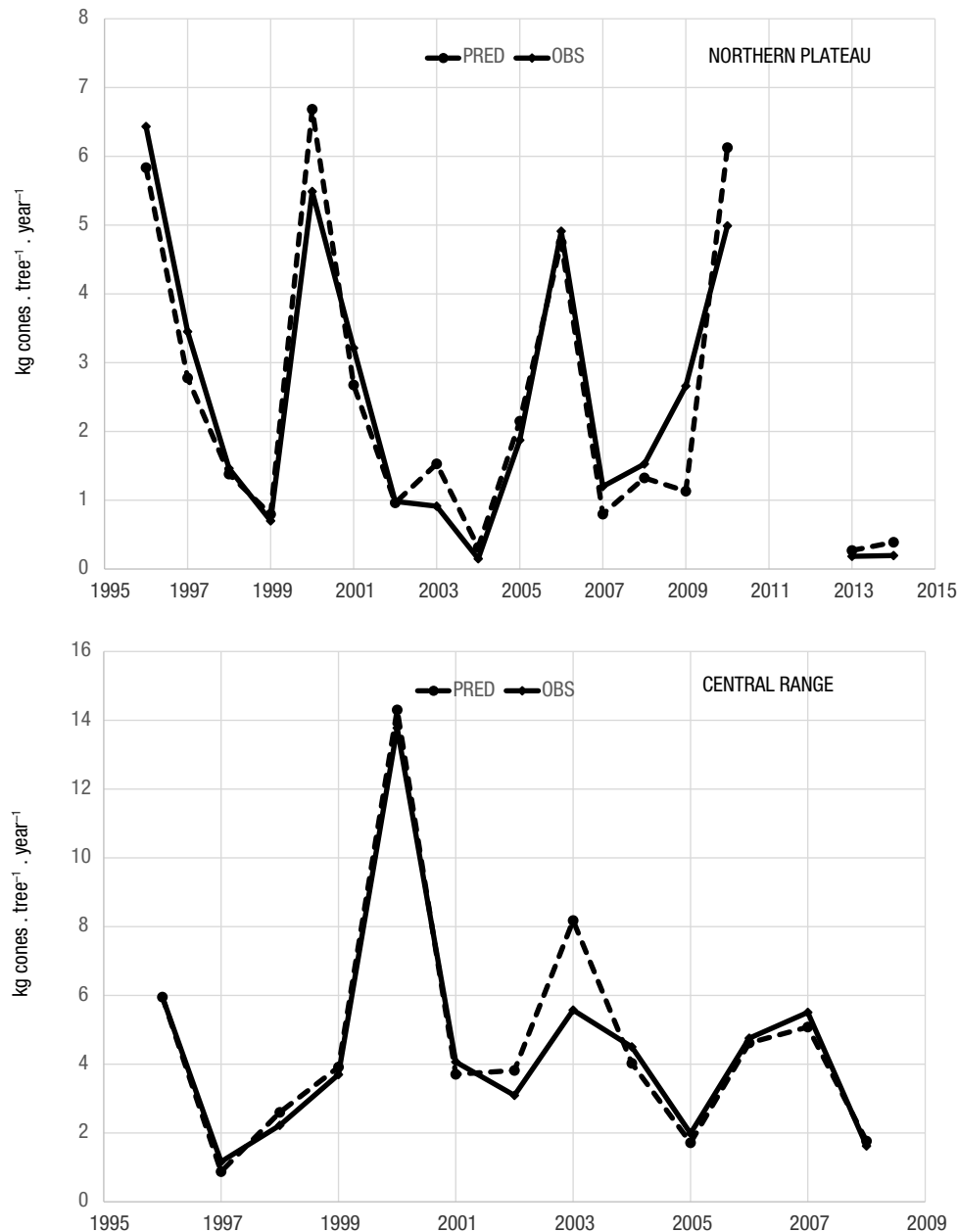


Figure 3. Observed (solid line) vs predicted (dotted line) value of average tree annual cone production, for the studied series in the two regions (1996-2014 in NP, 1996-2008 in CR). Predictions are the marginal ones (assuming zero values for the random plot fixed effects). In 2011 and 2012 no cones were collected in NP.

inventories that synthetizes the effect of both stand maturity and stand stocking. Stand density, defined as the number of stems per ha, was now integrated in the Reineke's stand density index, which among other advantages considers both stocking and tree size, being much more robust to immediate changes just after a low thinning. Finally, as in the previous version of the model, both tree size (dbh) and competitive status (dbh/dg) entered the model.

With respect to the predictors explaining interannual variability the main difference with the previous

model is the entrance of the model of the delayed effect occurring two and three years after a bumper crop. This inhibition of flower induction by resource depletion due to ripening crops has been previously described in stone pine (Mutke *et al.*, 2005a) and is related with the proposed hypothesis of resource depletion (Sork, 1993; Isagi *et al.*, 1997). Our result indicate that after a bumper year reduced crops can be expected with a delay of two and three years, pointing that the allocation of resources to enlarge cones in a bumper crop results in simultaneous inhibition of both bud and fe-

Table 7. Prediction accuracy for the six forests included in the independent set of evaluation

Region	Forest	Area (ha)	Obs (kg. year ⁻¹)	E (kg.year ⁻¹)	p-value	RE (%)	RMSE (kg.year ⁻¹)	EF
NP	35	1275	208545	22314	0.4475	10.7%	92028	85.1%
NP	39	1000	50081	6629	0.2884	13.2%	19840	90.1%
NP	40	1477	43863	-20688	0.1390	-47.2%	45652	23.6%
NP	44	1057	157872	44995	0.1428	28.5%	100144	71.1%
NP	79	1078	112350	28380	0.0941	25.3%	56226	86.7%
CR	75	811*	69355	-22846	0.0941	-32.9%	45978	60.5%

Where Obs: average annual cone production in the forest, E: mean error, p-value: level of significance for the null hypothesis $E=0$, RE: relative error, RMSE: root mean square error EF: modelling efficiency. *indicates that both observed and predicted values in forest 75 refers uniquely to the area commonly collected, which represents 25% of the total forest area.

male floral induction (Mutke *et al.*, 2005b, Crone *et al.*, 2009, Sala *et al.*, 2012).

The evaluation of a more complete set of climate covariates and an enlarged series of years resulted in the entrance within the model of the cumulative sum of the rain between May and November the year before flowering, instead of the separated May-June and October-November precipitations that entered in the previous version. This indicates a continuous influence of water availability during the whole vegetative period the year before flowering, which can directly enhance flowering by affecting bud development and differentiation (which was the main previous theory), but also indirectly by means of an increment on needle length, leaf area index, annual net assimilation and accumulated carbohydrates (Mutke *et al.*, 2003). This finding agrees with the theories postulating complex trade-offs between flowering-fruiting process and other key life-history variables (Knops *et al.*, 2007). Another finding of the present work is the influence of rainfall events just before flowering, pointing that the process of bud differentiation into vegetative or reproductive shoots might be delayed with respect to previous hypothesis. Finally, rainfall occurring the summer immediately after pollination, during the last months before maturation as well as the occurrence of extreme freezing events influence conelet survival and cone enlargement during the last period of maturation (Calama *et al.*, 2011).

In the case of the Central Range, the constructed model conforms the first approach to modelling cone production in the region based on climate, stand, tree and site attributes. Previous modelling efforts, as the one presented by Calama & Montero (2007), mainly focused on identifying and quantifying the different spatiotemporal sources of total variability in cone production at different spatiotemporal scales, not aiming to obtain predictions at tree or forest scale. Predictors entering the model for CR are mainly common with those for NP. In the case of spatial variability the unique difference is that dbh is missing as a predictor

in CR, probably due to the wider range of diameters and the particular irregular structure of some of the stands observed in the region (Montero *et al.*, 2003). A stratification of the territory based on soil, climate and altitude attributes, similar to that of NP, successfully substituted site index. In the temporal explicit variables differences are found in the timing of the periods of seasonal rainfall influence (Figure 5), indicating an anticipated phenology and an extended period of vegetative growth in CR with respect to NP due to warmer spring and rainfall (Montero *et al.*, 2008). Other main differences are related with the null influence of extreme freezing events in CR, where are quite uncommon.

As expected, our results confirm that the factors affecting cone production in both regions are similar, giving support to the hypothesis of correlated environmental variables ruling spatial synchrony at large scales, as stated by other authors (Koenig & Knops, 2013). Thus the main differences detected in cone production between the two regions are more related with the observed differences in the timing and intensity of these influential factors rather than with regional differences in the response to these factors. In this sense it is noteworthy to indicate that larger cone productions in Central Range are mainly related with the larger amount of annual rainfall and the absence of extreme freezing events, together with intrinsic stand factors, as is the larger ageing and lower stocking of the stands (Table 1). This overmaturation of the stands in CR, linked with the lack of application of a strict silviculture can result, in the next decades, in a significant reduction in cone crops within the region associated with the already observed processes of natural mortality and decay of overaged trees (Spathelf *et al.*, 2014).

The predictions by the models in both region mimicked the observed patterns of spatial and interannual variability within the fitting data set, accurately differentiating good and bad crop in both regions. Model application lead to unbiased estimates of cone production in all the different spatiotemporal scales analyzed,

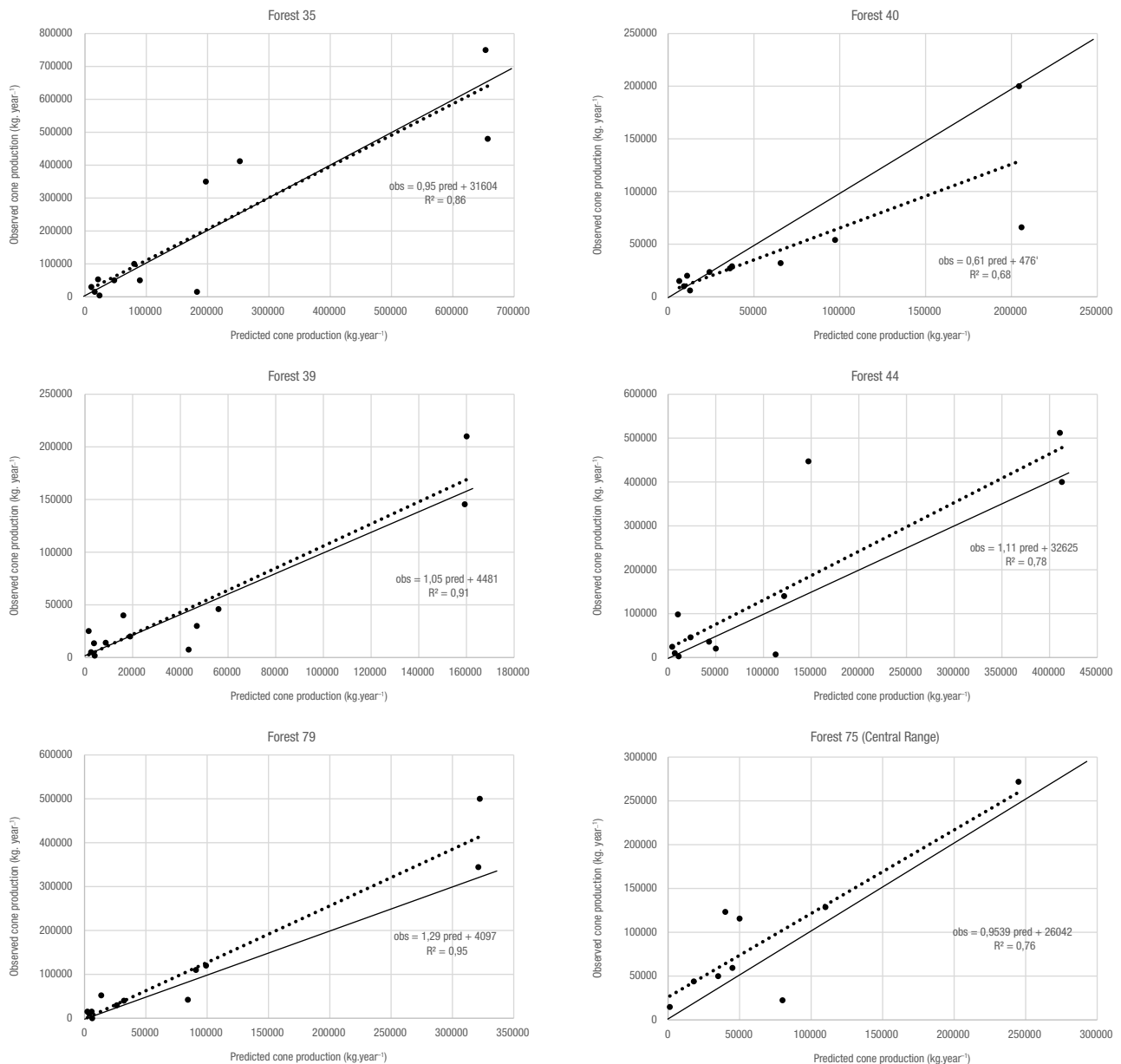


Figure 4. Agreement between observed and predicted values of annual cone production at forest scale, for the six studied forests of the independent validation data set. Solid line represents the observed = predicted 1:1 functions. Dotted line represents the fitted model $\text{observed} = a + b \cdot \text{predicted}$, whose parameters and R^2 are shown in the plot.

resulting in goodness of fit statistics similar in both regions. In the case of the NP the new fitted model is able to explain the recent decay in cone production during the campaigns extending from 2012 to 2015. This result supports the hypothesis of climate causes of the reduction, aggravated by the inhibitory effect of the exceptional 2010 cone crop, against the hypothesis focusing on biotic agents like *Leptoglossus occidentalis*. Expected decrease in cone production associated with new scenarios of rainfall reduction has been also predicted by means of complex process based models (Pardos *et al.*, 2015). However, the effect of this exotic bug over kernel yield per cone weight has already

been described in the regions (Mutke *et al.*, 2014, Calama *et al.*, 2015), and the potential effect on immature conelets should be evaluated by contrasting observed and predicted cone crops in years where larger cone production is expected from climatic conditions. Moreover, specific ongoing experiments studying the evolution of female conelets through the ripening cycle under controlled levels of the insect will give insight on this topic (Strong, 2015).

Upscaling the predictions of the model from the tree to the forest scale permits to obtain unbiased estimates of annual cone production for the forest management units. Application of the models using input data from

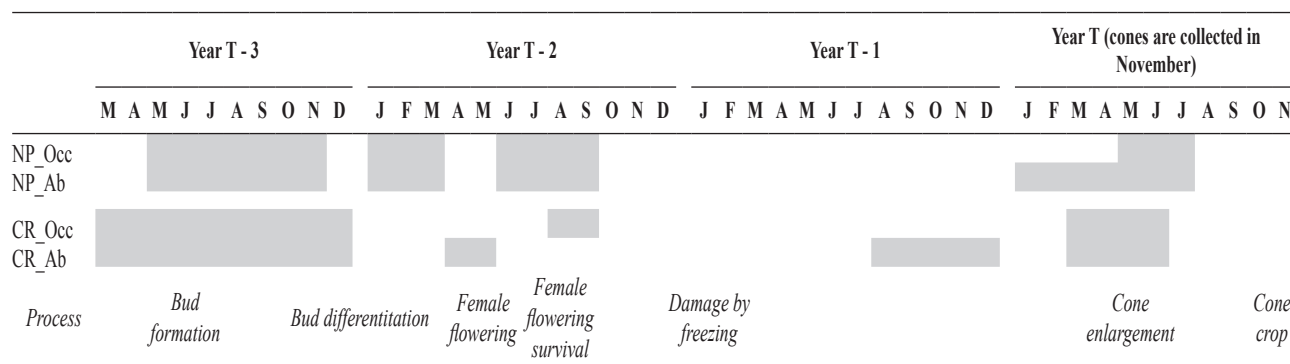


Figure 5. Rainfall (dark gray) and freezing (pale gray) events affecting cone production through the whole flowering, fruiting and maturation cycle in Northern Plateau and Central range. Physiological related processes are matched with the months of occurrence. NP refers to Northern Plateau, CR to Central Range, Occ refers to submodel for occurrence of fruiting, Ab to submodel for abundance of fruiting.

forest management inventories and updated climate data from regional meteorological stations will allow obtaining reliable estimates of cone production by the end of July of the year of cone maturation, four months before the beginning of cone collection, and by the time where public auctions for cone production are carried out. Given the standardized character of the climate variables, it will be possible to make even one-year advanced predictions of cone production, defining a confidence interval for the prediction based on different scenarios of rainfall during the last months of maturation. All this advanced information is essential for a sound planning of all the activities involving the different stakeholders, from the ownerships to the cone collection enterprises, forest services and pine nut industries.

Although the fitted models requires climate predictors extending up to three-years before cone collection, given the standardized character of these predictors it is possible to make average predictions for a given period by assuming a zero value, and even consider the effect of future climate scenarios by assuming variations on the climate standardized predictors within the proposed range. In this sense, the constructed models will be easily implemented within a stand level simulator, as PINEA2 (<https://sites.google.com/site/regeneracionnatural/pinea2>), allowing to compare and define optimal silviculture under different scenarios. In addition, the required input dataset for the model is compatible with the data from the Spanish National Forest Inventory, permitting to obtain annual estimates of cone production at regional scale.

Acknowledgements

The authors thank to the Regional Forest Services of Valladolid, Ávila and Comunidad de Madrid their continuous support in maintaining the experimental

trials. The authors also wish to thank Rodrigo Gandía, Luis Finat, David Cubero, Rebeca Martín, Enrique Garriga and Ángel Bachiller for their appreciated help in carrying out this research.

References

Bonet JA, Palahi M, Colinas C, Pukkala T, Fischer CR, Miina J, Martínez De Aragón J, 2010. Modelling the production and species richness of wild mushrooms in pine forests of Central Pyrenees in northeastern Spain. *Can J For Res* 40: 347-356. <http://dx.doi.org/10.1139/X09-198>.

Bracalini M, Benedettelli S, Croci F, Terreni P, Tiberi R, Panzavolta T, 2013. Cone and Seed Pests of *Pinus pinea* L.: Assessment and Characterization of Damage. *For Entomol* 106: 229-234.

Bravo F, Alvarez-Gonzalez JG, Del Rio M, Barrio M, Bonet JA, Bravo-Oviedo A, Calama R, Castedo-Dorado F, Crecente-Campo F, Condes S, et al., 2011. Growth and yield models in Spain: historical overview, contemporary examples and perspectives. *Forest Systems* 20(2): 315-328. <http://dx.doi.org/10.5424/fs/2011202-11512>.

Calama R, Montero, G, 2007. Cone and seed production from stone pine (*Pinus pinea* L.) stands in Central Range (Spain). *Eur J For Res* 126(1): 23-35. <http://dx.doi.org/10.1007/s10342-005-0100-8>.

Calama R, Madrigal G, Candela JA, Montero G, 2007. Effect of fertilization on the production of an edible forest fruit: stone pine (*Pinus pinea* L.) nuts in SW Andalusia. *Forest Systems* 16(3): 241-252. <http://dx.doi.org/10.5424/srf/2007163-01013>.

Calama R, Mutke S, Gordo J, Montero G, 2008. An empirical ecological-type model for predicting stone pine (*Pinus pinea* L.) cone production in the Northern Plateau (Spain). *For Ecol Manage* 255 (3/4): 660-673.

Calama R, Tome M, Sánchez-González M, Miina J, Spanos K, Palahi M, 2010. Modelling Non-Wood Forest Products in Europe: a review. *Forest Systems* 19: 69-85. <http://dx.doi.org/10.5424/fs/201019S-9324>.

- Calama R, Mutke S, Tomé JA, Gordo FJ, Montero G, Tomé M, 2011. Modelling spatial and temporal variability in a zero-inflated variable: the case of stone pine (*Pinus pinea* L.) cone production. *Ecol Model* 222: 606-618. <http://dx.doi.org/10.1016/j.ecolmodel.2010.09.020>.
- Calama R, Manso R, Tomé JA, 2012. ¿Cómo modelizar datos con exceso de ceros? Métodos y aplicaciones a la investigación forestal. *Cuadernos SECF* 34: 55-65.
- Calama R, Pardos M, Conde M, Madrigal G, Mutke S, Montero G, Gordo FJ, 2015. Pérdidas de rendimiento en piñón en piñas de *Pinus pinea* L.: análisis interregional. III Reunión Científica de Sanidad Forestal SECF. Madrid 7-8 octubre 2015.
- Cañadas MN, 2000. *Pinus pinea* L. en el Sistema Central (valles del Tiétar y del Alberche): desarrollo de un modelo de crecimiento y producción de piña. Ph D Thesis. Universidad Politécnica, Madrid.
- Castellani C, 1989. La produzione legnosa e del frutto e la durata economico delle pinete coetanee di pino domestico (*Pinus pinea* L.) in un complesso assestato a prevalente funzione produttiva in Italia. *Annali ISAF* 12: 161-221.
- Crone E, Miller E, Sala A, 2009. How do plants know when other plants are flowering? Resource depletion, pollen limitation and mast-seeding in a perennial wildflower. *Ecology Letters* 12: 1119-1126. <http://dx.doi.org/10.1111/j.1461-0248.2009.01365.x>.
- Finat L, Gordo J, 2014. Sensibilización acerca del papel de la propiedad pública y gestión forestal sostenible en la provincia de Valladolid. Jornada proyecto PROPINEA, Pedrajas de san Esteban, noviembre 2014. <http://propinea.es/wp-content/uploads/Sensibilizacion-acerca-del-papel-de-la-propiedad-publica.pdf>.
- García Güemes C, 1999. Modelo de simulación selvícola para *Pinus pinea* L. en la provincia de Valladolid. Ph D Thesis. Universidad Politécnica, Madrid.
- Gordo FJ, 2004. Selección de grandes productores de fruto de *Pinus pinea* L. en la Meseta Norte. Ph D Thesis. Universidad Politécnica, Madrid.
- Isagi Y, Sugimura K, Sumida A, Ito H, 1997. How does masting happen and synchronize? *J Theor Biol* 187: 231-239. <http://dx.doi.org/10.1006/jtbi.1997.0442>.
- Knops JMH, Koenig WD, Carmen WJ, 2007. A negative correlation does not imply a trade-off between growth and reproduction in California oaks. *PNAS (USA)* 104: 16982-16985. <http://dx.doi.org/10.1073/pnas.0704251104>.
- Koenig WD, Knops JMH, 2013. Large-scale spatial synchrony and cross-synchrony in acorn production by two California oaks. *Ecology* 94(1): 83-93. <http://dx.doi.org/10.1890/12-0940.1>.
- Lambert D, 1992. Zero-inflated Poisson regression, with an application to defects in manufacturing. *Technometrics* 34 : 1-14. <http://dx.doi.org/10.2307/1269547>.
- Lesieur V, Yart A, Guilbon S, Lorme P, Auger-Rozenberg MA, Roques A, 2014. The invasive *Leptoglossus* seed bug, a threat for commercial seed crops, but for conifer diversity?. *Biol Invasions* 16(9): 1833-1849. <http://dx.doi.org/10.1007/s10530-013-0630-9>.
- Mandallaz D, 2007. Sampling techniques for Forest inventories. Chapman & Hall/CRC. Applied Environmental Statistics. Boca Ratón, 256 pp. <http://dx.doi.org/10.1201/9781584889779>.
- Montero G, Cañadas N, Yagüe S, Bachiller A, Calama R, Garriga E, Cañellas I, 2003. Aportaciones al conocimiento de las masas de *Pinus pinea* L. en los Montes de Hoyo de Pinares (Ávila - España). *Revista Montes* 73.
- Montero G, Calama R, Ruiz Peinado R, 2008. Selvicultura de *Pinus Pinea* L. En Montero G, Serrada R, Reque J (Eds.) *Compendio de Selvicultura de Especies*, pp 431-470. INIA - Fundación Conde del Valle de Salazar. Madrid, España.
- Mutke S, Gordo J, Climent J, Gil L, 2003. Shoot Growth and Phenology Modelling of Grafted Stone Pine (*Pinus pinea* L.) in Inner Spain. *Ann For Sci* 60(6): 527-537. <http://dx.doi.org/10.1051/forest:2003046>.
- Mutke S, Gordo J, Gil L, 2005a. Variability of Mediterranean stone pine cone production: yield loss as response to climatic change. *Agric For Met* 132: 263-272. <http://dx.doi.org/10.1016/j.agrformet.2005.08.002>.
- Mutke S, Sievänen R, Nikinmaa E, Perttunen J, Gil L, 2005b. Crown architecture of grafted stone pine (*Pinus pinea* L.): shoot growth and bud differentiation. *Trees-Structure and Function* 19(1): 15-25. <http://dx.doi.org/10.1007/s00468-004-0346-7>.
- Mutke S, Calama R, González-Martínez S, Montero G, Gordo J, Bono D, Gil L, 2012. Mediterranean Stone Pine: Botany and Horticulture. *Horticultural Reviews* 39: 153-202.
- Muttk S, 2013. Stone pine in Mediterranean forests. In: Besacier C, Briens M, Duclercq M, Garavaglia V (coord.) *State of Mediterranean Forests 2013 (SoMF 2013)*, FAO Silva Mediterranea, Rome, pp. 83-87.
- Mutke S, Martínez J, Gordo J, Nicolas JL, Herrero N, Pastor A, Calama R, 2014. Severe seed yield loss in Mediterranean stone pine cones. medPINE5, 5th International Conference on Mediterranean Pines. Solsona, Spain.
- Pardos M, Calama R, Maroschek M, Rammer W, Lexer MJ, 2015. A model-based analysis of climate change vulnerability of *Pinus pinea* stands under multi-objective management in the Northern Plateau of Spain. *Annals of Forest Science* 72(8): 1009-1021. <http://dx.doi.org/10.1007/s13595-015-0520-7>.
- Prada MA, Gordo FJ, de Miguel J, Mutke S, Catalán-Bachiller G, Iglesias S, Gil L, 1997. Regiones de procedencia de *Pinus pinea*. Ministerio de Medio Ambiente, Madrid, Spain.
- Sala A, Hopping K, McIntire EJ, Delzon S, Crone E, 2012. Masting in whitebark pine (*Pinus albicaulis*) depletes stored nutrients. *New Phytol* 196: 189-199. <http://dx.doi.org/10.1111/j.1469-8137.2012.04257.x>.
- Sánchez González M, Calama R, Cañellas I, Montero G, 2007. Variables influencing cork thickness in Spanish cork oak forests: a modelling approach. *Ann For Sci* 67(2): 301-312. <http://dx.doi.org/10.1051/forest:2007007>.
- Sork VL, 1993. Evolutionary ecology of mast seeding in temperate and tropical oaks (*Quercus* spp). *Vegetatio* 107/108: 133-147. http://dx.doi.org/10.1007/978-94-011-1749-4_9.
- Strong W, 2015. Lodgepole pine seedset increase by mesh bagging is due to exclusion of *Leptoglossus occidentalis*

- (Hemiptera: Coreidae). *J Entomol Soc Brit Columbia* 112: 3-17.
- Spathelf P, van der Maaten E, van der Maaten-Theunissen M, Campioli M, Dobrowolska D, 2014. Climate change impacts in European forests: the expert views of local observers. *Ann For Sci* 71: 131-137. <http://dx.doi.org/10.1007/s13595-013-0280-1>.
- Tu W, 2002. Zero-inflated data. In: El-Shaarawi AH, Piegorch WW (Eds.) *Encyclopedia of Environmetrics*. John Wiley and Sons, Chichester, United Kingdom, pp. 2387-2391.
- Vázquez-Piqué J, Pereira H, 2008. What to take into account to develop cork weight models?: review and statistical considerations. *Forest Systems* 17(3): 199-215. <http://dx.doi.org/10.5424/srf/2008173-01035>.